

2025 Corinthians Annual Cruise Race List

Notes:

Mod 7/22/2025

Bearing (Brg) indicates true bearing from own ship to the mark for recording starting or finishing
Races may be shortened by starting at later marks, or finishing at earlier marks

Race 1 (8/1/2025) – Belfast to Buck's Harbor

Long Course

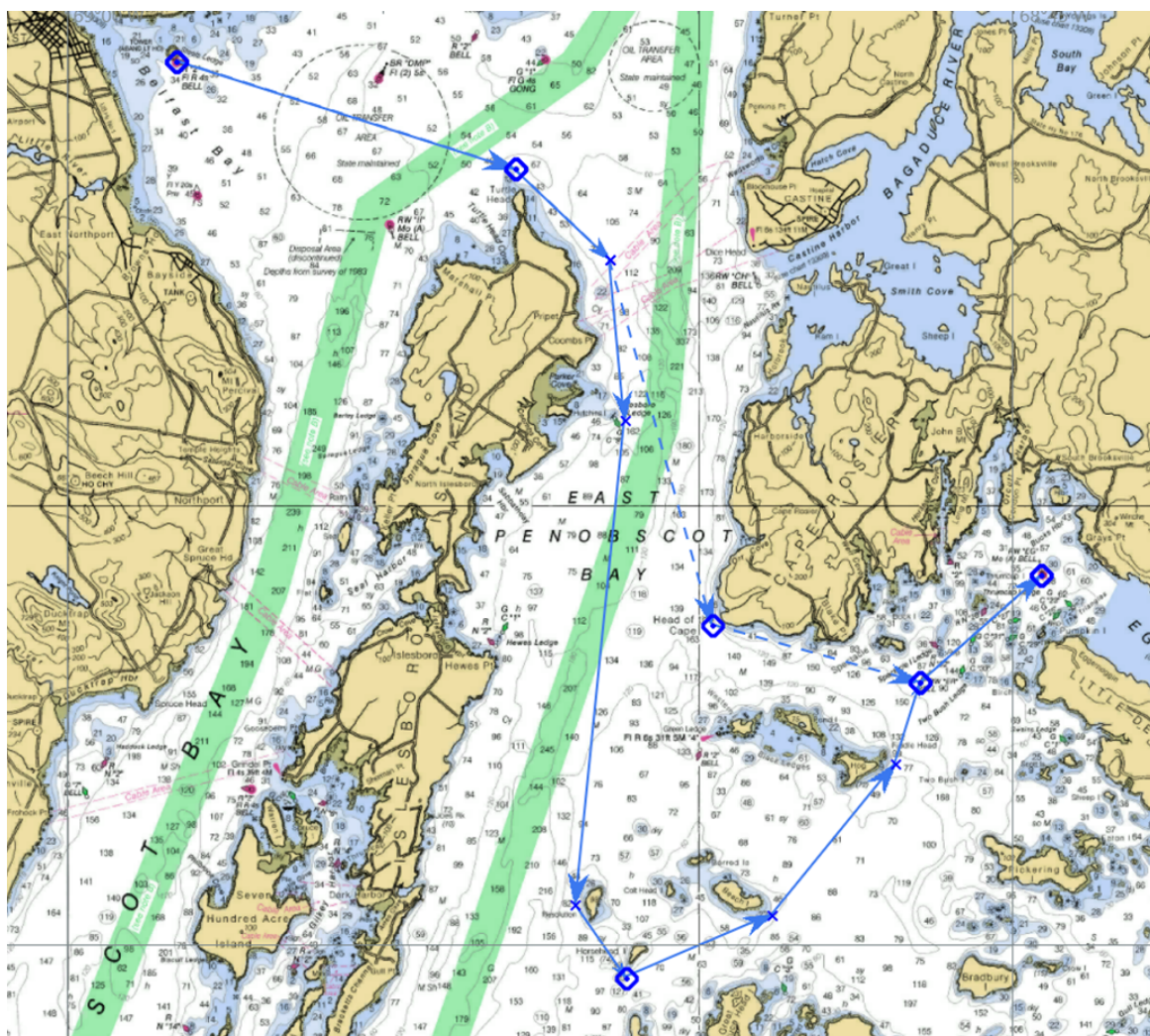
1. Start at Steels Ledge bell 'R2' – leave to port (Brg 018T) [44° 25.1' N / 068° 58.3' W]
2. Leave Isleboro Island (Turtle Head) to starboard [44° 23.8' N / 068° 52.9' W]
3. Leave Isleboro Ledge can 'G9' to starboard [44° 21.0' N / 068° 51.2' W]
4. Leave Horsehead Island to port [44° 14.6' N / 068° 51.2' W]
5. Leave Eggmoggin Reach bell 'ER' to starboard (If Finish Brng 106T) [44° 18.0' N / 068° 46.5' W]
6. Finish at Eggmoggin Reach bell 'EG' – leave to starboard (Brng 138T) [44° 19.2' N / 068° 44.6' W]

Approximate distance: 20.7 Nmi, time limit 6 hr (unless shortened)

Short Course

1. Start at Isleboro Is. Buoy "li" – leave to port (Brg 347T) [44° 23.1' N / 068° 54.9' W]
2. Leave Isleboro Island (Turtle Head) to starboard [44° 23.8' N / 068° 52.9' W]
3. Leave Eggmoggin Reach bell 'ER' to Port (If Finish Brng 014T) [44° 18.0' N / 068° 46.5' W]
4. Finish at Eggmoggin Reach bell 'EG' – leave to starboard (Brng 138T) [44° 19.2' N / 068° 44.6' W]

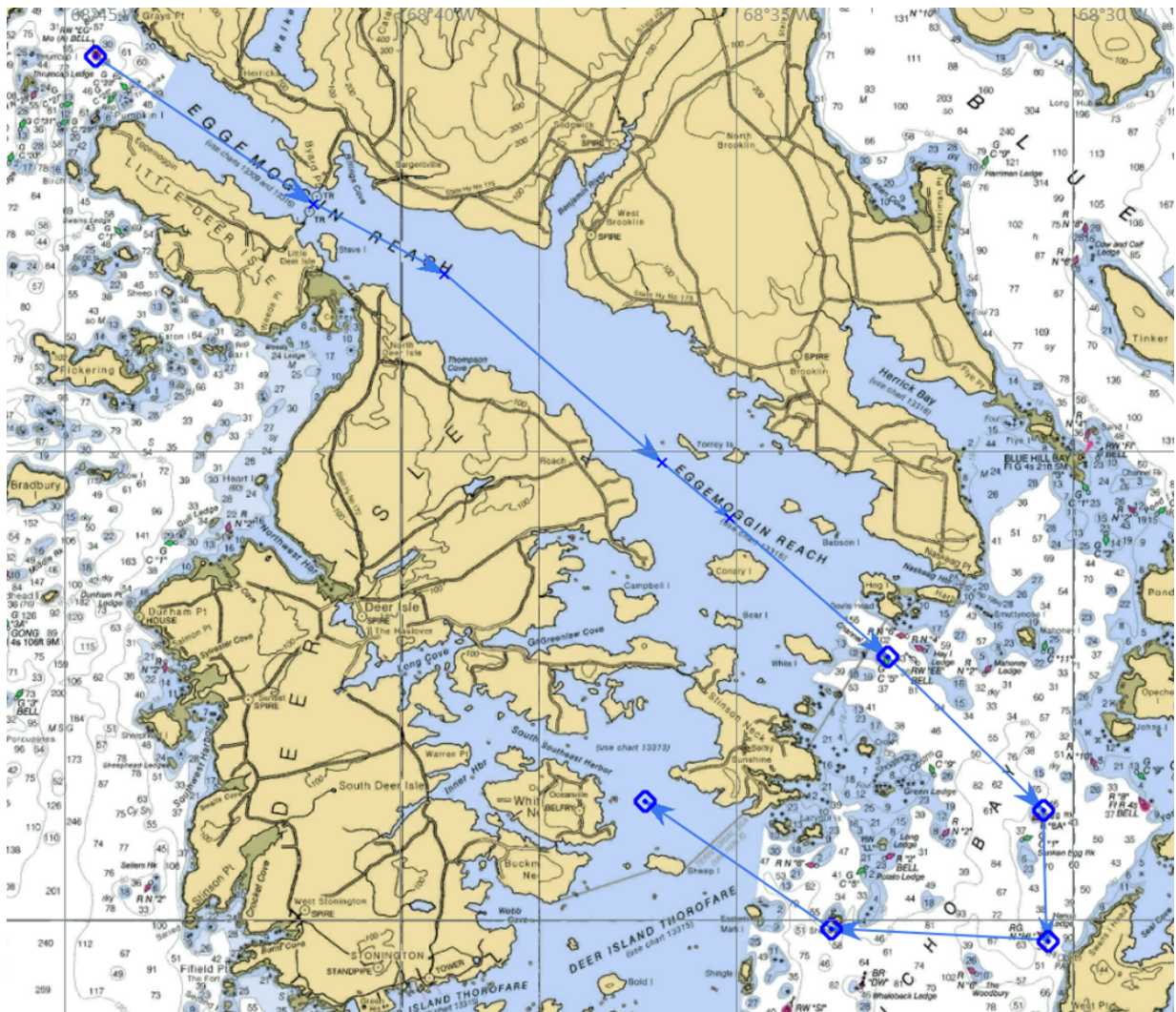
shortened distance: ~11.6 Nmi Time Limit 4 hr (uness shortened)



Race 2 (8/2/2025) – Buck’s Harbor to Billing’s Cove

1. Start: Leave Eggmoggin Reach bell ‘EG’ to port (Brg 032T) [44° 19.2' N / 068° 44.6' W]
2. Leave Tinker Ledges ‘G17’ to Stbd (If start, Brg:220T) [44° 15.9' N / 068° 39.4' W]
3. Leave Conary Ledge ‘G7’ to Stbd (if start, Brg 221T) [44° 14.3' N / 068° 35.2' W]
4. Leave Channel Rock ‘G5’ to Stbd (if start, Brg 225T) [44° 12.8' N / 068° 32.8' W]
5. Leave Egg Rock to starboard [44° 11.2' N / 068° 30.5' W]
6. Leave Hanus Ledge ‘HL’ to starboard (If finish Brg: 266T) [44° 09.8' N / 068° 30. 4' W]
7. Leave Shabby Island to starboard [44° 09.9' N / 068° 33.6' W]
8. Finish at Whaleback Ledge ‘G1’ – leave to port (Brg 213T) [44° 11.3' N / 068° 36.4' W]

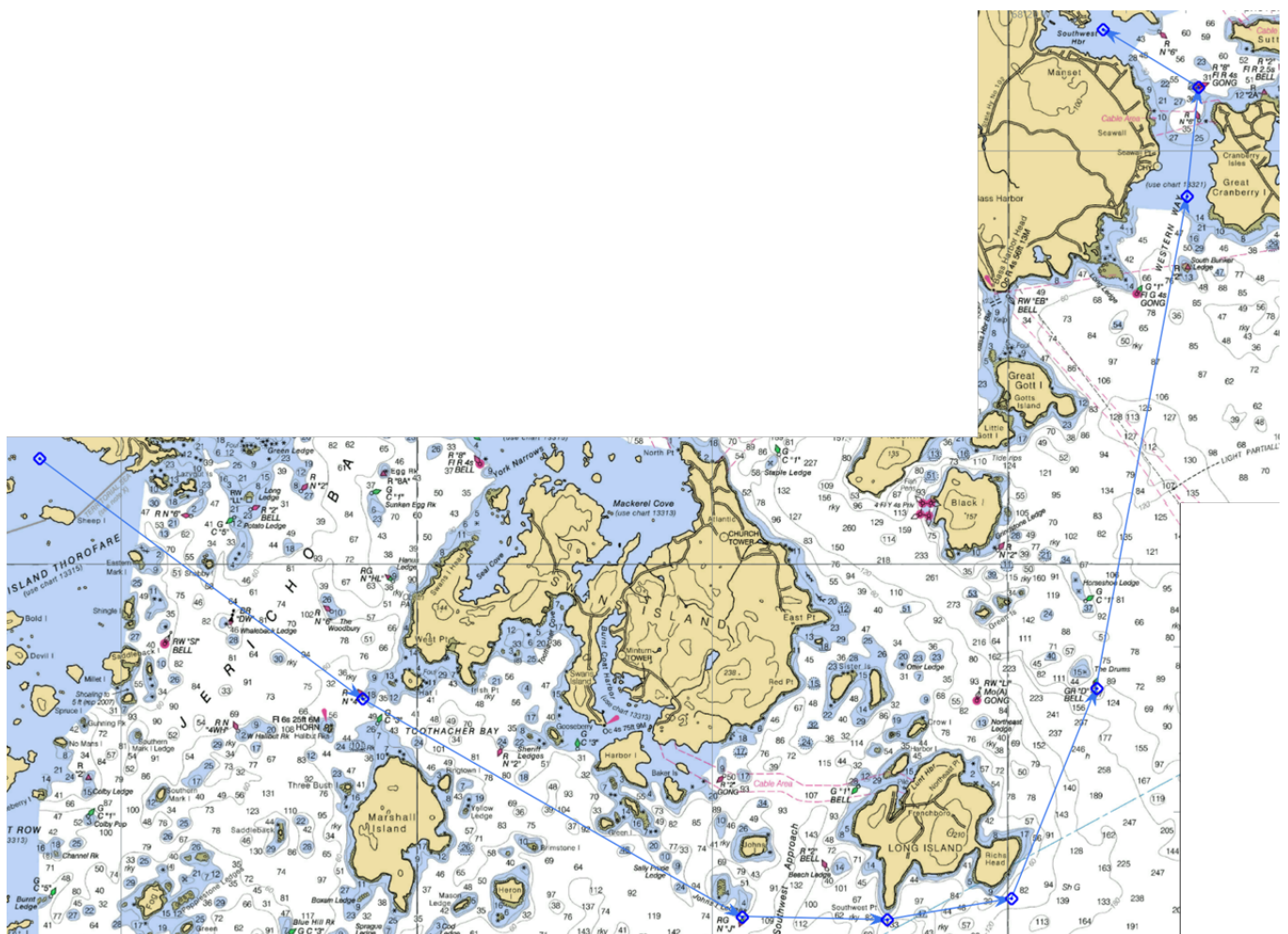
Approximate distance: 19.1 Nmi Time Limit 6 hr (unless shortened)



Race 3 (8/3/2025) – Billing's Cove to Somes Sound

1. Start at Whaleback Ledge G1 – leave to Stbd (Brg 216T) [44° 11.3' N / 068° 36.4' W]
2. Leave Hat Island Ledge 'R4' to port (If Start Brg 030T) [44° 08.4' N / 068° 30.9' W]
3. Leave Johns Island Ledge 'J' to port (If Start Brg 000T) [44° 05.7' N / 068° 24.5' W]
4. Leave Long Island to port [44° 06.0' N / 068° 19.9' W]
5. Leave Drums Junction bell 'D' to port (If Finish Brg 291T) [44° 08.5' N / 068° 18.5' W]
6. Leave Flynn's Ledge 'G5' to port (If Finish, Brng 280T) [44° 14.5' N / 068° 17.0' W]
7. Leave Spurling Pt gong 'R8' to port (If Finish, Brg 276T) [44° 15.8' N / 068° 16.8' W]
8. Finish at Greening Island 'R8" – leave to Stbd (Brg 031T) [44° 16.5' N / 068° 18.4' W]

Approximate distance: 25.0 Nmi Time Limit 8 hr (unless shor



Notes:

Mod 7/25/2025

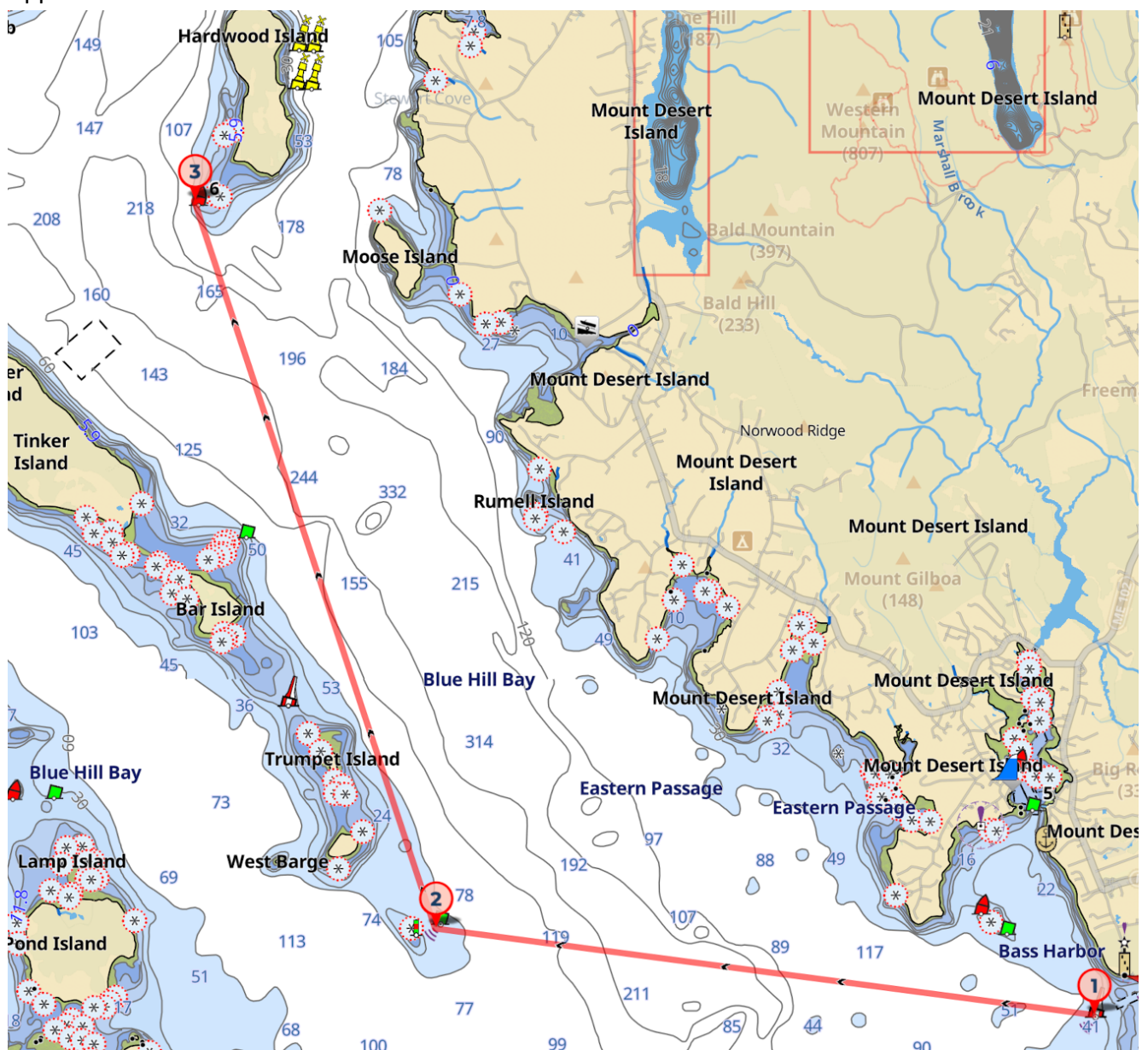
Bearing (Brg) indicates true bearing from own ship to the mark for recording starting or finishing

Races may be shortened by starting at later marks, or finishing at earlier marks

Race 4 -Somes Sound to Pretty Marsh Harbor

1. Start at Bass Harbor Head RW Gong Buoy 'WB' –Leave to Stbd (Brg 008T) [44° 13.1' N / 068° 20.5' W]
2. Leave Ship and Barges bell Buoy 'G3' to Stbd [44° 16.5' N / 068° 13.1' W]
3. Finish at Hardwood Island buoy 'R6' to Stbd (Brng 072T) [44° 17.7' N / 068° 27.6' W]

Approximate distance: 8.1 Nmi Time Limit 3 hr



Race 5 (8/5/2025) – Pretty Marsh Harbor to Swans Island (Two Options)

Primary: Burnt Coal Harbor

1. Start at Hardwood Island buoy 'R6' to Port (Brng 078T) [44° 17.7' N / 068° 27.6' W]
 2. Leave Trumpet Island Bar Buoy 'TI' to Stbd [44° 14.9' N / 068° 26.9' W]
 3. Leave Pond Island Passage 'G1' to Port [44° 14.3' N / 068° 28.7' W]
 4. Leave Sunken Egg Rock 'G1' to Port (If finish, record time at 112T) [44° 10.8' N / 068° 30.8' W]
 5. Leave the Woodbury 'R6' to Port [44° 09.4' N / 068° 31.5' W]
 6. Leave Hat Island Ledge 'R4' to Port [44° 08.4' N / 068° 30.9' W]
 7. Finish at Sheriff Ledges Buoy 'R2' – leave to Port (Brg 021T) [44° 07.8' N / 068° 28.6' W]
- Approximate distance: 12.6 Nmi (Shortened: 8.2 nmi) Time Limit 4 hr /Shortened 3 hr

Alternate: Mackerel Cove

1. Start at Hardwood Island buoy 'R6' to Port (Brng 078T) [44° 17.7' N / 068° 27.6' W]
2. Leave Trumpet Island Bar Buoy 'TI' to Stbd [44° 14.9' N / 068° 26.9' W]
3. Leave Pond Island Passage 'G1' to Port [44° 14.3' N / 068° 28.7' W]
4. Finish at Sheriff Ledges Buoy 'R2' – leave to Stbd (Brg 220T) [44° 07.8' N / 068° 28.6' W]

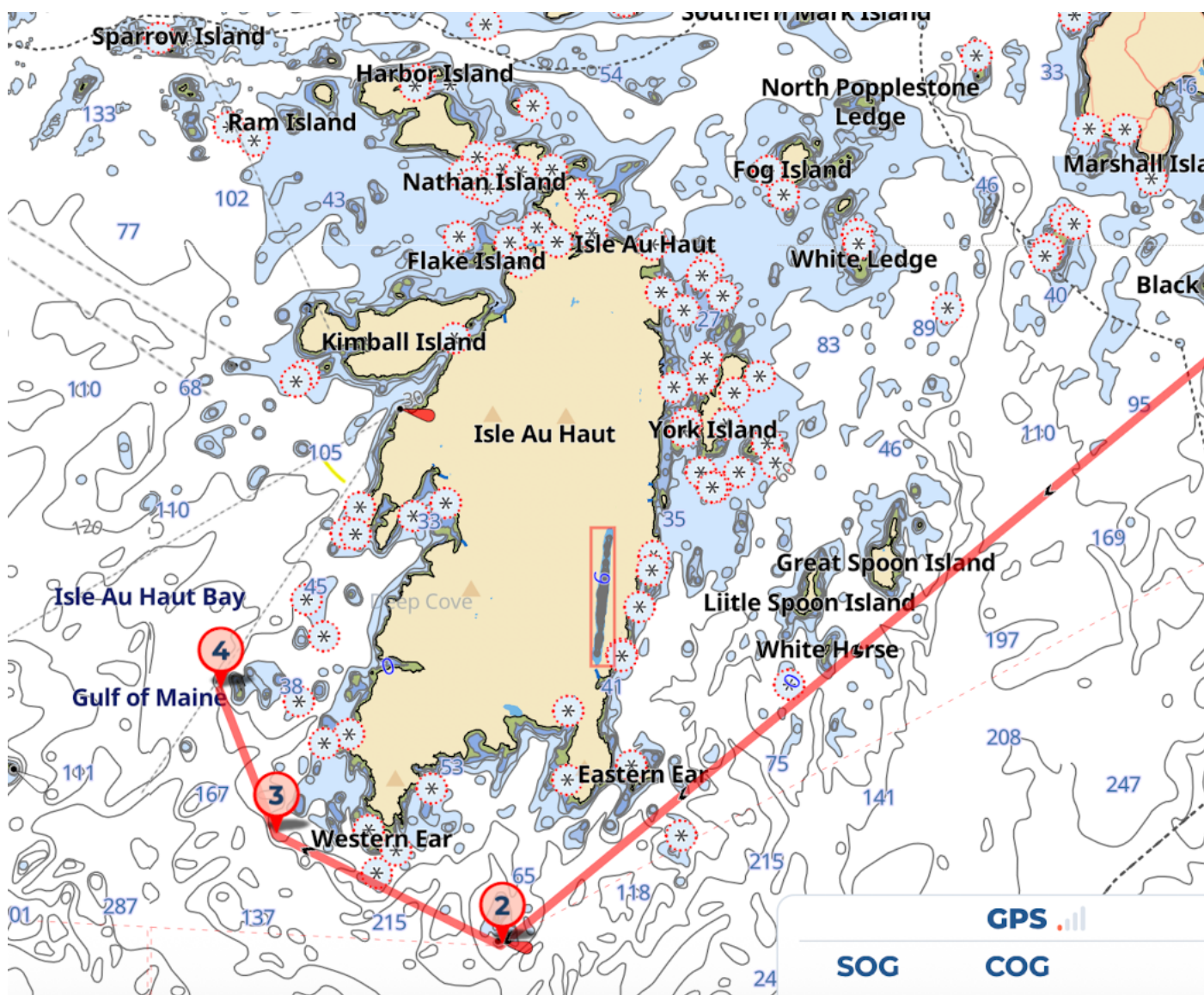
Approximate distance: 9.1 Nmi Time Limit 3 hr



Race 6 (8/6/2025) – Swan Island to Vinalhaven

1. Start at Seal Ledge Buoy 'G1' to Stbd (Brg 320T) [44° 06.3' N / 068° 23.0' W]
2. Leave Roaring Bull bell 'R2' to Stbd [43° 59.4' N / 068° 37.9' W]
3. Leave The Washers 'R2' to Stbd [44° 00.3' N / 068° 40.5' W]
4. End at The Brandies 'R4' to Stbd (Brg 069T) [44° 01.1' N / 068° 52.8' W]

Approximate distance: 12.3 Nmi, Time Limit 4 hr (unless shortened)



Race 7 (8/8/2025) – Vinalhaven to Camden

1. Start at Fox Isles Thorofare 'R20' to Stbd (Brg 316T) [44° 07.3' N / 068° 54.5' W]
2. Leave Fox Isls Thorofare 'R26' to Stbd [44° 05.8' N / 068° 56.8' W]
3. Leave West Penobscot Bay Entrance RW 'PB' to Stbd [44° 05.9' N / 068° 00.2' W]
4. Finish at Camden Harbor Ent 'R2' to Stbd (Brg 256T) [44° 12.0' N / 069° 02.4' W]

Approximate distance: 11.2 Nmi, Time Limit 4 hr

